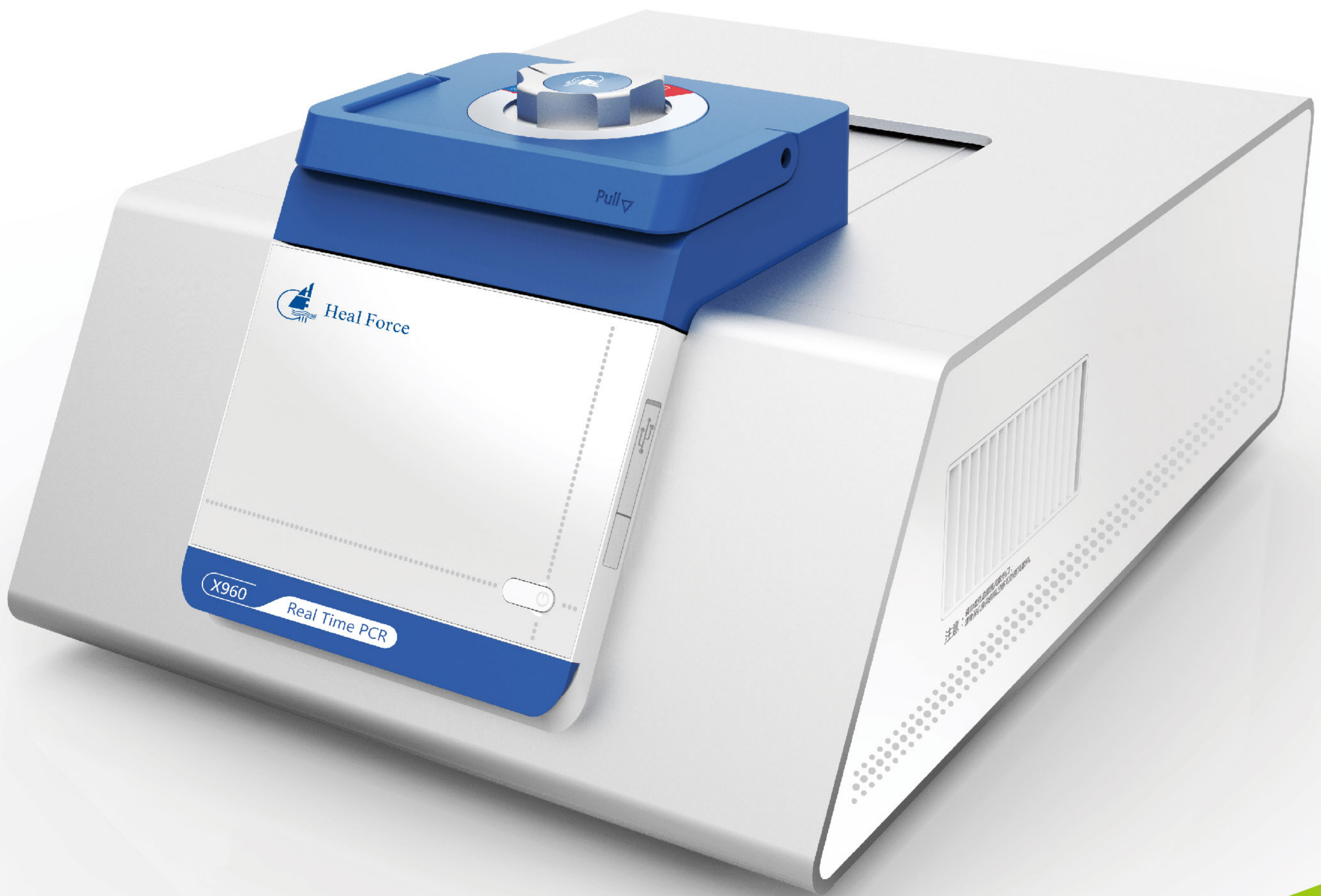


Life Science



# Heal Force Real-Time PCR

A platform you can depend on



Heal Force Leads You to Healthier Life



## Product Introduction

The X960 Real-Time PCR system is a high-performance benchtop instrument giving you greater control of your experiment data. It delivers reliability, sensitivity, and accuracy, which is optimized to enable the broadest range of quantitative PCR applications.

In real-time quantitative PCR (qPCR), PCR product is measured at each cycle. By monitoring reactions during the exponential amplification phase of the reaction, users can determine the initial quantity of the target with great precision without involving post-PCR analysis such as gel electrophoresis and image analysis.

## Innovative Optical Design

Two channel (X960A) and five channel (X960B) fluorescent detection system with LED light source and high resolution CCD

The optical system automatically collects data from all wells during data acquisition at the same time.

X960 can discriminate up to five targets in a single reaction well.

The optical filter sets are designed to maximize fluorescence detection for specific dyes in specific channels

Compatible with different reagent and consumables



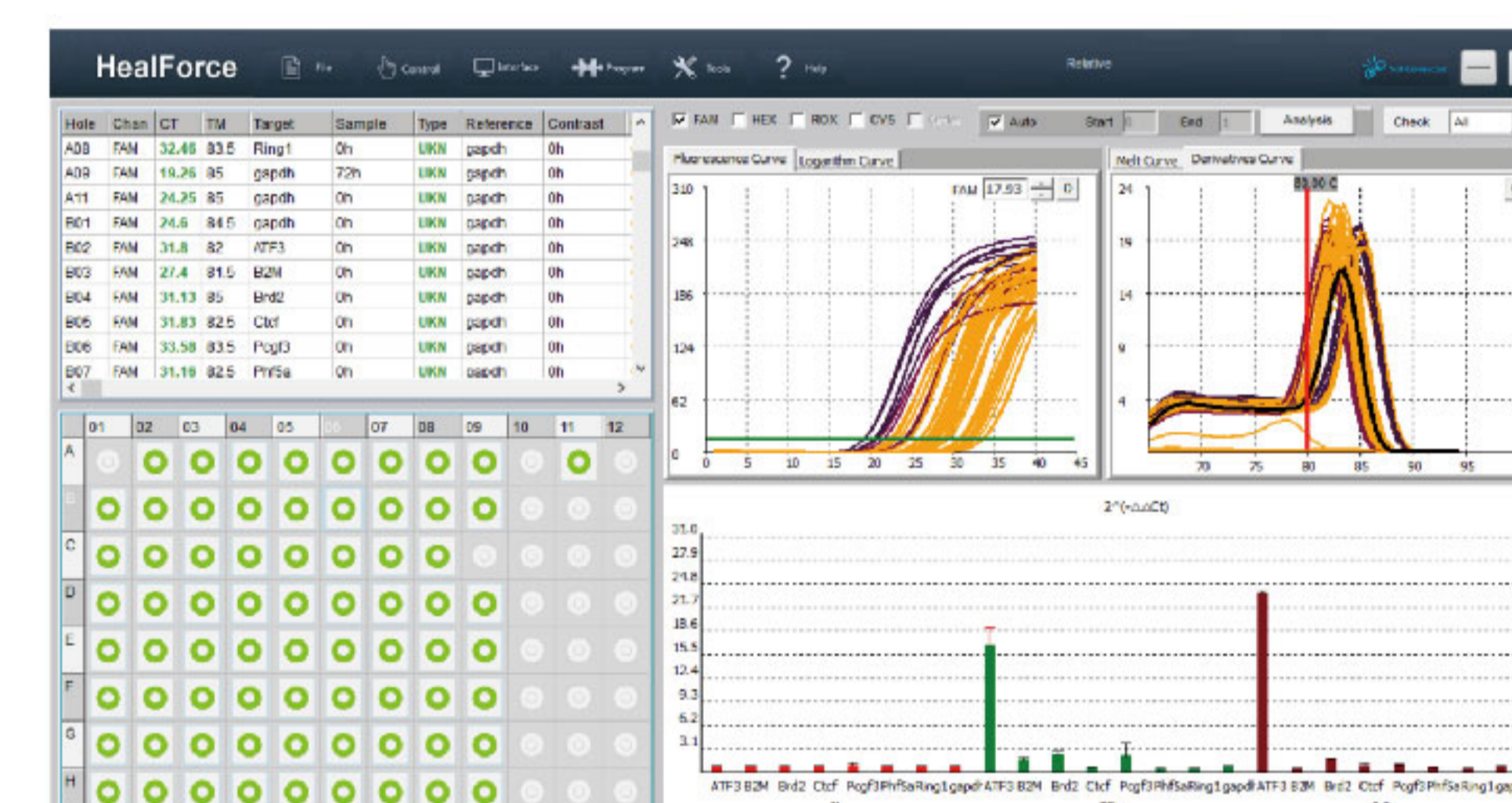
## Precise Temperature Control

Block utilizes most advanced Peltier-based technology with high amplification efficiency

Up to 6°C/s maximum ramp rate saves your valuable time dramatically

Two independent temperature control mode- block and tube, maximize control flexibility

Excellent temperature uniformity limits the variation between wells, ensuring the accuracy of low copy sample



## Powerful Software

X960 Manager Software accommodates individual needs with intuitive navigation and customizable settings

The software can be used for a variety of applications including absolute/relative quantification, melting curve (dissociation curve), etc

With integrated powerful visualization tools, the data is analyzed on machine directly

## Humanization Design

Advanced programming function like gradient and touch-down

The machine can be connected with PC through WI-FI or LAN

Software allows you to manage and monitor several X960s from your computer.

Low noise, low energy consumption, long life-span

## Ready to Run

Factory calibrated for optical and thermal accuracy, the instrument is delivered ready for quick installation and use.



# X960 Real-Time PCR Systems



## Blocks

Compatible with 96-well plate, 12-well strip tubes, 8-well strip tubes

High quality peltier plates ensure amplification efficiency  
Standard gold-plating promotes heat conduction performance

## Lid

3D style design with well pressure distribution and heat preservation

Unique sliding track is convenient for sample operation

## Operation system

Developed upon Linux operation system, and equipped with A8 CPU for better control experience

## Software

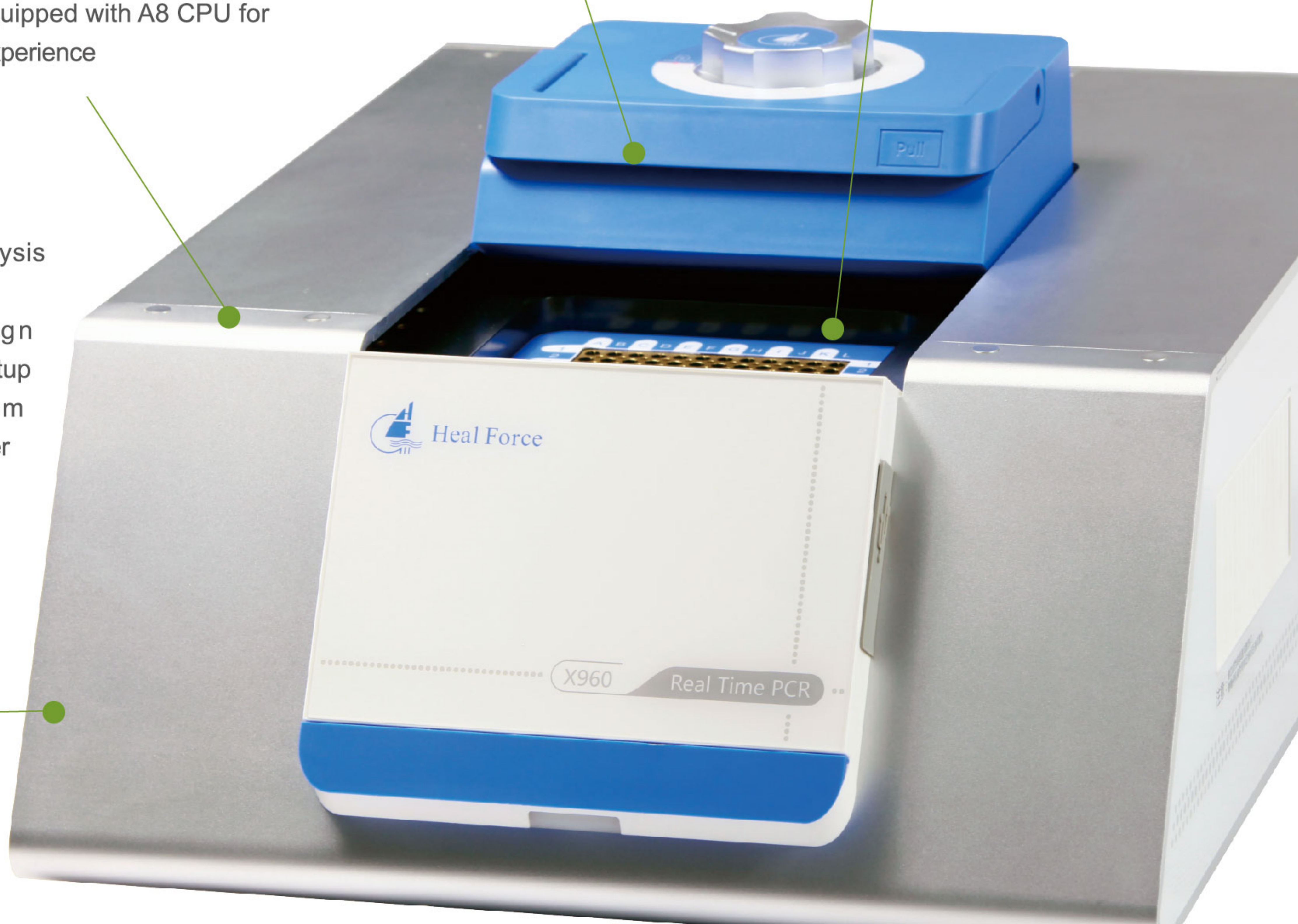
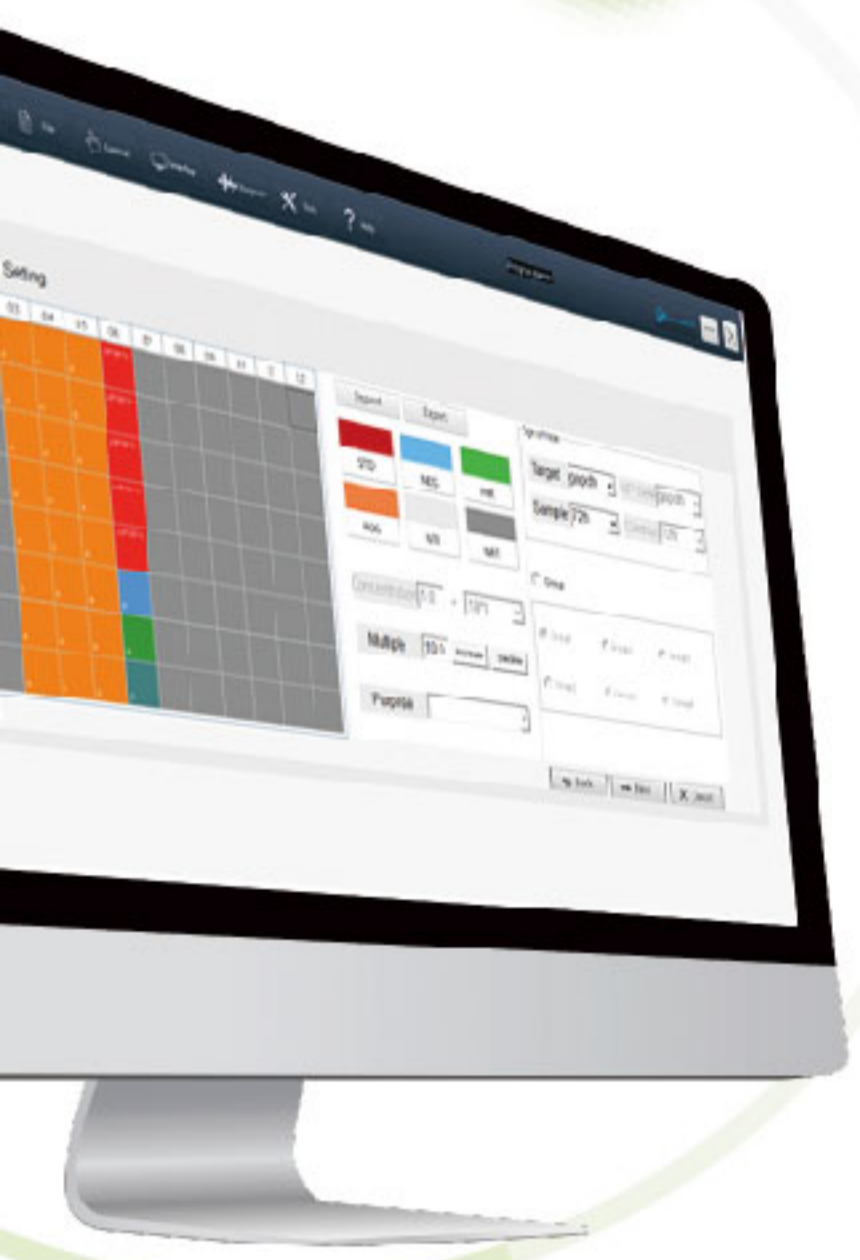
Independent software analysis module

Intuitive software design enables easy experiment setup and an interactive system allows you to get results faster

## Robust construction

6mm aluminium alloy main body with solid construction, nice looking curves and fresh color

Adjustable footing designed for achieving balance easily



## Technical specifications

Model	X960A	X960B
Channel	2	5
Reactions per run	96	96
Block Format	96-well 0.2-ml	96-well 0.2-ml
Color Combinations	Up to 2	Up to 5
Light source	High brightness monochrome LED	High brightness monochrome LED
Detector	Highly sensitive cold light CCD	Highly sensitive cold light CCD
Detection dynamic range	10 <sup>0</sup> -10 <sup>10</sup>	10 <sup>0</sup> -10 <sup>10</sup>
Sensitivity	1 copy	1 copy
Reaction volume	15ul-100ul	15ul-100ul
Chemistry	All real-time PCR-based chemistries. Flexibility for chemistries without passive reference dye.	
Excitation source	White LED	White LED
Excitation filters/colors	Channel1: 470nm Channel2: 525nm -	Channel1: 470nm Channel2: 525nm Channel3: 585 nm Channel4: 610nm
Detection filters/colors	Channel1: 525 nm Channel2: 570 nm -	Channel1: 525 nm Channel2: 570 nm Channel3: 610 nm Channel4: 678 nm
Kits & Reagent	Channel1: FAM/SYBR Channel2: VIC/HEX/JOE/TET/TAMRA/CY3 - -	Channel1: FAM/SYBR Channel2: VIC/HEX/JOE/TET/TAMRA/CY3 Channel3: ROX/TexasRed Channel4: CY5
Block Material	Peltier	Peltier
Accuracy	±0.1℃	±0.1℃
Temp Uniformity	±0.4℃(10 sec after reaching 95℃) ±0.2℃(10 sec after reaching 55℃)	±0.4℃(10 sec after reaching 95℃) ±0.2℃(10 sec after reaching 55℃)
Temp Range	0℃-99.9℃	0℃-99.9℃
Max. ramp rate	5℃	5℃
Gradient range	30℃-99.9℃	30℃-99.9℃
PC Operation system	WindowsXP/VISTA/Windows7/Window8 / Window10	WindowsXP/VISTA/Windows7/Window8 / Window10
X960 Operation system	Linux	Linux
CPU	A8	A8
Network	LAN /WIFI	LAN /WIFI
Multiple control	Support	Support
Applications Available	Gene Expression, Genotyping, Copy Number Variation, Protein Detection, MicroRNA, Pathogen Detection	
Size	W 592 ×D 440 × H 280 mm	W 592 × D 440 × H 280 mm



Heal Force Bio-Meditech Holdings Group  
 Heal Force International Trading(Shanghai) Co., Ltd  
 6788 Songze Road, Qingpu District, Shanghai 201706, P.R. China  
 Tel +86 21 62728646 Email export@healforce.com, Fax +86 21 62728646

[www.healforce.com](http://www.healforce.com)

Information is subject to change and/or updating without notice  
 © 2019 Heal Force. CL-NISON-EN-BABYCABINET-20190815